

ACB SINGLE ENDED BEAM LOAD CELL



DESCRIPTION:

The ACB is a high performance stainless steel beam type load cell. An integral mounting step removes the need for spacer plates and ensures optimum "bolt down" conditions.

This product is suitable for small and medium platform scales, hybrid scales, pallet weighers and process weighing.

The fully welded construction and the cable entry ensure that this product can be used successfully in harsh environments found in the food, chemical and allied process industries.

FEATURES:

- Low profile, stainless steel construction
- Hermetically sealed, IP66 and IP68
- Certified to OIML R60, 6000d²
- ATEX versions are available for use in potentially explosive atmospheres, caused by gas or dust
- 1000 Ohm bridge impedance
- Current calibration output (SC) ensures easy and accurate connection of multiple load cells
- Integral mounting step
- CAPACITIES: 500 → 5000 kg

ACB: SPECIFICATIONS

Capacity	E _{max}	kg	500 ² , 1000, 2000, 5000				
			C3	C4	C5	C6	
Accuracy Class According to OIML R60 ²				3000	4000	5000	6000
Maximum Number of Verification Intervals	n _{lc}			E _{max} /6000	E _{max} /8000	E _{max} /10000	E _{max} /12000
Minimum Verification Interval (V _{min} = E _{max} /Y)	V _{min}			E _{max} /15000	E _{max} /20000	E _{max} /20000	E _{max} /20000
Minimum Verification Interval, Type MR	V _{min}						
Accuracy Class According to Type Designation ¹			CC	C3	C4	C5	C6
Combined Error		%S	<= ± 0.050	<= ± 0.023	<= ± 0.018	<= ± 0.014	<= ± 0.012
Hysteresis		%S	<= ± 0.050	<= ± 0.0166	<= ± 0.0125	<= ± 0.0100	<= ± 0.0083
Non-Repeatability	E _R	%S	<= ± 0.070	<= ± 0.035	<= ± 0.026	<= ± 0.021	<= ± 0.018
Creep Error (30 Minutes)		%S	<= ± 0.060	<= ± 0.025	<= ± 0.018	<= ± 0.015	<= ± 0.012
Creep Error (20-30 Minutes)		%S	<= ± 0.0200	<= ± 0.0053	<= ± 0.0039	<= ± 0.0032	<= ± 0.0026
Minimum Dead Load Output Return	MDLOR	%S	<= ± 0.050	<= ± 0.0166	<= ± 0.0125	<= ± 0.0100	<= ± 0.0083
Minimum Dead Load Output Return, Type MI6	MDLOR	%S _{nom}		<= ± 0.0083	<= ± 0.0083	<= ± 0.0083	<= ± 0.0083
Temp. Effect on Min. Dead Load Output	TC _O	%S _{nom} /5°C	<= ± 0.0250	<= ± 0.0117	<= ± 0.0088	<= ± 0.0070	<= ± 0.0058
Temp. Effect on Min. Dead Load Output, Type MR	TC _O	%S _{nom} /5°C		<= ± 0.0047	<= ± 0.0035	<= ± 0.0035	<= ± 0.0035
Temperature Effect on Sensitivity	TC _S	%S/5°C	<= ± 0.0250	<= ± 0.0088	<= ± 0.0065	<= ± 0.0053	<= ± 0.0045
Minimum Dead Load	E _{min}	%E _{max}	0				
Safe Load Limit	E _{lim}	%E _{max}	150				
Ultimate Load	E _{ult}	%E _{max}	300				
Maximum Safe Side Load		%E _{max}	100				
Deflection at E _{max}		mm	0.13, 0.21, 0.29, 0.38				
Excitation Voltage		V	5 ... 12				
Maximum Excitation Voltage		V	15				
Rated Output	S _{nom}	mV/V	2 <= ± 0.02				
Current Calibration	SC-version		Standard				
Zero Balance		%S _{nom}	<= ± 1.0				
Input Resistance	R _{in}	Ohm	1000 ± 50				
Output Resistance	R _{out}	Ohm	1000 ± 10				
Insulation Resistance	R _{ins}	M Ohm	>= 5000				
Compensated Temperature Range	T _{cps}	°C	-10 ... +40				
Operating Temperature Range ³	T _{opr}	°C	-40 ... +80				
Storage Temperature Range	T _{srg}	°C	-40 ... +90				
Element Material			Stainless steel 1.4542				
Sealing (DIN 40.050 / EN 60.529)			IP66 and IP68				
Recommended Torque on Fixation Bolts		Nm	0.5 - 2t:150 / 5t: 550				
ATEX options for Potentially Explosive Atmospheres			II1GD EEx ia IIC T4/T6 or II1D T70°C, II3G EEx nA II T6, IM1 EEx ia I, II3D T70°C				

1 The specified accuracies apply for the compensated temperature range.

2 For 500kg: highest class C3, MI6 not available

3 For ATEX T_{opr} = -20 ... +40°C

SC-version: The rated output and the output resistance are balanced in such a way, that the output current is calibrated to within 0.05% of a reference value. This allows easy parallel connection of the load cells.

Correct mounting of the load cells is essential to ensure optimum performance.

Further information is available on request.

REVERE TRANSDUCERS EUROPE B.V.

an SI Technologies company
 Ramshoorn 7
 P.O. Box 6909, 4802 HX Breda
 The Netherlands
 Tel.: (+31) 76-5480700
 Fax: (+31) 76-5412854
 E-mail: info@revere.nl

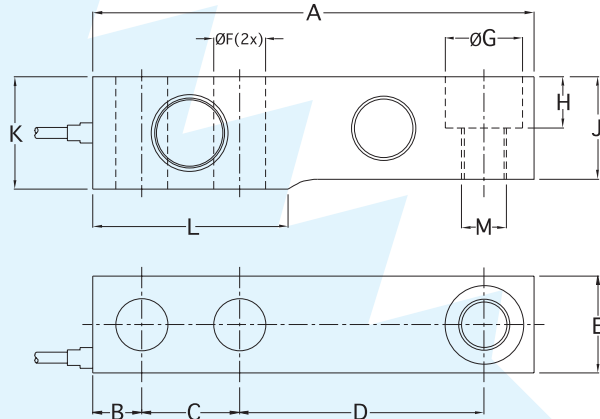
REVERE TRANSDUCERS INC.

an SI Technologies company
 14192 Franklin Avenue
 Tustin, CA 92780-7016
 U.S.A.
 Tel.: (+1) 714.731.1234
 Fax: (+1) 714.731.2019
 E-mail: info@reveretransducers.com

REGIONAL OFFICE UK
 The Business Centre
 Edward Street, Redditch
 Worcs, B97 6HA, UK
 Tel.: (+44) 1527-65888
 Fax: (+44) 1527-64888
 E-mail: alittlejohn@revere.nl

Cable specifications:
 Length 3m for capacities up to 1t.
 Length 6m for 2t and 5t.
 6-Wire cable standard.
 Excitation + Green
 Excitation - Black
 Output + White
 Output - Red
 Sense + Yellow
 Sense - Blue
 Shield Transparent

Shield is not connected to the load cell body.



E _{max} (kg)	Dimensions in mm			
	500	1000	2000	5000
A	130.0	130.0	130.0	172.0
B	15.5	15.5	15.5	19.1
C	25.4	25.4	25.4	38.1
D	76.2	76.2	76.2	95.3
E	31.8	31.8	31.8	38.0
F	13.0	13.0	13.0	20.5
G	20.5	20.5	20.5	30.2
H	14.2	14.2	14.2	20.0
J	26.0	27.95	31.95	40.0
K	31.8	31.8	35.8	44.0
L	57.1	57.1	57.1	76.0
M	M12	M12	M12	M20

All dimension tolerances according to ISO 2768m, middle accuracy, unless otherwise specified.

All specifications subject to change without notice.