

# ALC SINGLE ENDED BEAM LOAD CELL



## DESCRIPTION:

The ALC is a low profile stainless steel bending beam type load cell. An integral mounting step removes the need for spacer plates and ensures optimum "bolt down" conditions.

This product is suitable for small and medium platform scales, hybrid scales, pallet weighers and process weighing.

A reliable sealing and mechanical protection of the strain gauge area is ensured by the use of potting compound with a metal cover.

This product meets the stringent Weights and Measures requirements throughout Europe.

## FEATURES:

- Low profile, stainless steel construction
- Certified to OIML R-60, **3000d**
- Sealing: IP67 (EN 60.529)
- **1000Ω** bridge impedance
- Mechanically interchangeable with existing model HCB
- Current calibration output (SC version) ensures easy and accurate parallel connection of multiple load cells
- Integral mounting step
- **CAPACITIES: 250 → 2000 kg**

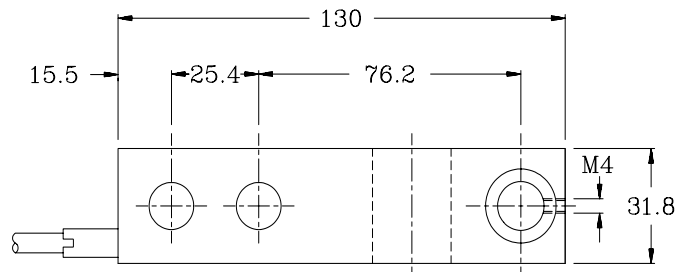
# ALC: SPECIFICATIONS

Standard Capacities (=E <sub>max</sub> )	Kg	250, 500, 1000, 2000				
Accuracy Class According to OIML R-60			C1	C2	C3	C3MR
Max. Number of Verification Intervals (n <sub>ic</sub> )			1000	2000	3000	3000
Minimum Verification Interval (V <sub>min</sub> )			E <sub>max</sub> /7000	E <sub>max</sub> /7000	E <sub>max</sub> /10000	E <sub>max</sub> /20000
Accuracy According to Type Designation		CC	C1	C2	C3	C3MR
Combined Error	%S	≤ ± 0.0500	≤ ± 0.0300	≤ ± 0.0230	≤ ± 0.0200	≤ ± 0.0200
Non-Repeatability	%S	≤ ± 0.0200	≤ ± 0.0200	≤ ± 0.0100	≤ ± 0.0100	≤ ± 0.0100
Minimum Dead Load Output Return <sup>1</sup>	%S	≤ ± 0.0500	≤ ± 0.0500	≤ ± 0.0250	≤ ± 0.0167	≤ ± 0.0167
Creep Error (30 Minutes) <sup>1</sup>	%S	≤ ± 0.0600	≤ ± 0.0490	≤ ± 0.0245	≤ ± 0.0245	≤ ± 0.0245
Creep Error (20-30 Minutes) <sup>1</sup>	%S	≤ ± 0.0200	≤ ± 0.0105	≤ ± 0.0053	≤ ± 0.0053	≤ ± 0.0053
Temp. Effect on Min. Dead Load Output	%S/5°C	≤ ± 0.0250	≤ ± 0.0100	≤ ± 0.0100	≤ ± 0.0070	≤ ± 0.0035
Temp. Effect on Sensitivity	%S/5°C	≤ ± 0.0250	≤ ± 0.0085	≤ ± 0.0060	≤ ± 0.0045	≤ ± 0.0045
Minimum Dead Load	%E <sub>max</sub>	0				
Maximum Safe Over Load	%E <sub>max</sub>	150				
Ultimate Over Load	%E <sub>max</sub>	300				
Maximum Safe Side Load	%E <sub>max</sub>	100				
Deflection at E <sub>max</sub>	mm	0.20/ 0.20/ 0.22/ 0.31				
Excitation Voltage	V	5...12				
Maximum Excitation Voltage	V	15				
Rated Output (=S)	mV/V	2				
Tolerance on Rated Output	mV/V	± 0.02				
Zero Balance	%S	≤ ± 1.0				
Input Resistance	Ω	1000 ± 10				
Output Resistance	Ω	1000 ± 10				
Insulation Resistance	MΩ	≥ 5000				
Compensated Temperature Range	°C	-10...+40				
Operating Temperature Range	°C	-40...+80				
Storage Temperature Range	°C	-40...+90				
Element Material (DIN)		Stainless Steel 1.4542				
Sealing (DIN 40.050 / EN 60.529)		IP67				
SC-Version (Current Calibration)		tandard				
Recommended Torque on Fixation Bolts	Nm	50 - 75				

<sup>1</sup> Applies for the temperature range -10 to +40 °C

**"SC-Version"** The "Rated Output" and the "Output Resistance" are balanced in such a way, that the output current is calibrated within 0.05% to a reference value. This allows an easy parallel connection of load cells.

Accuracy classes C1, C2, C3 and C3MR are in agreement with the OIML recommendation R-60. The correct mounting of the load cells is essential to ensure optimum performance. Further information is available on request.

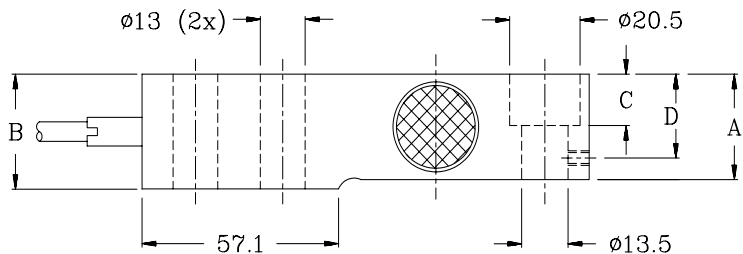


## REVERE TRANSDUCERS EUROPE B.V.

Ramshoorn 7  
Postbus 6909, 4802 HX Breda  
The Netherlands  
Tel: (+31) 76-5480700  
Fax: (+31) 76-5412854  
E-mail: info@revere.nl

## REVERE TRANSDUCERS INC.

14192 Franklin Avenue  
Tustin, CA 92680-7016  
U.S.A.  
Tel: (+1) 714.731.1234  
Fax: (+1) 714.731.2019  
E-mail: info@reveretransducers.com



E <sub>max</sub>	250	500	1000	2000
A	25.2	26.1	29.2	34.0
B	31.8	31.8	31.8	35.8
C	13.2	14.2	14.2	14.2
D	22.2	23.2	23.2	23.2

### Cable specifications:

Cable length: 3m  
Excitation + Green  
Excitation - Black  
Output + White  
Output - Red  
Screen Clear

Cable screen is not connected to load cell body

### Attention:

Dimensions: mm.  
All dimension tolerances according to ISO 2768m unless otherwise specified

All specifications subject to change without notice

### REGIONAL OFFICE UK

The Business Centre  
Edward Street, Redditch  
Worcs B97 6HA, UK  
Tel: (+44) 152-765888  
Fax: (+44) 152-764888  
E-mail: alittlejohn@revere.nl